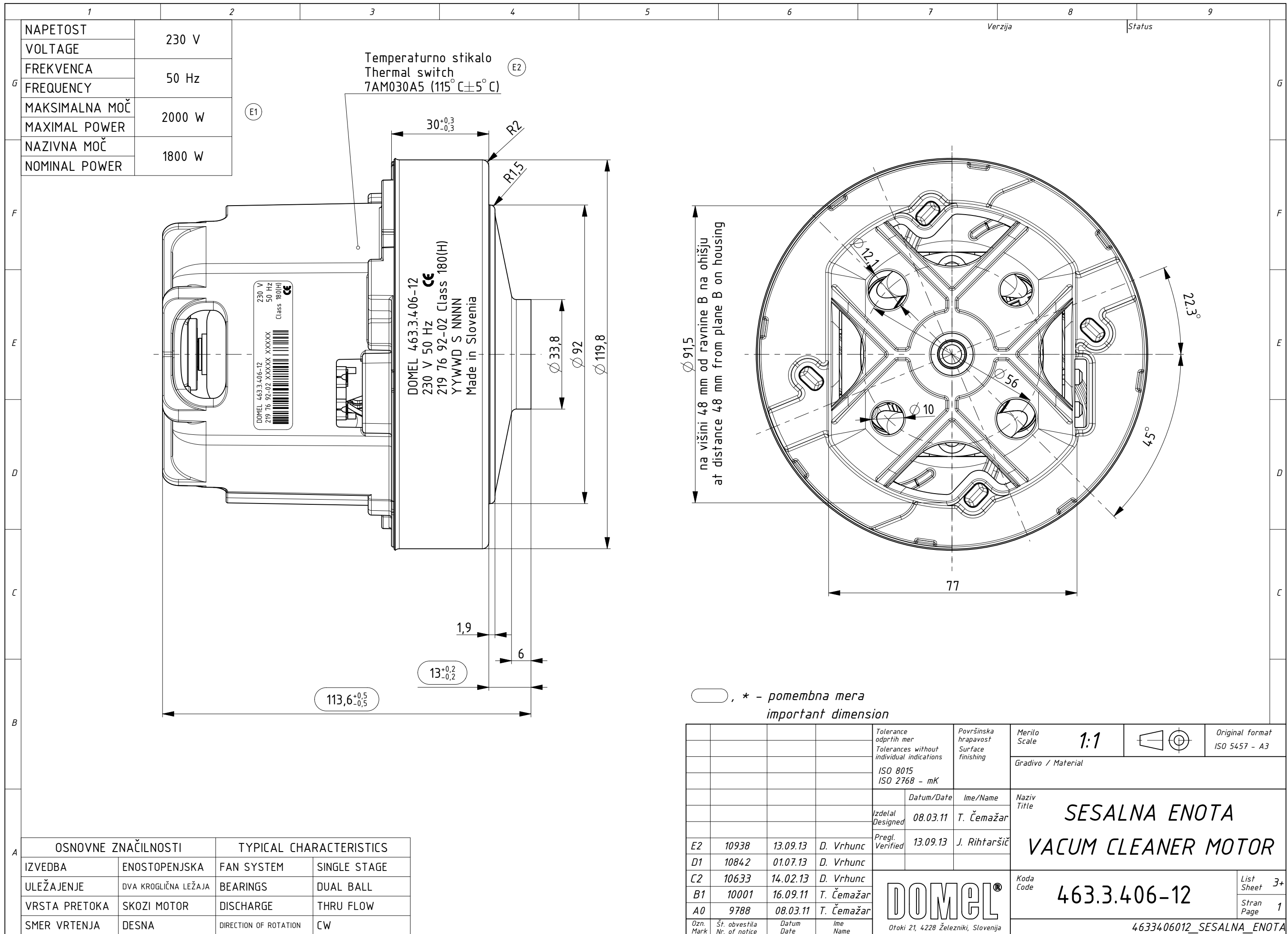


Izdelano s CAD/ProEngineer - ročno spreminjanje ni dovoljeno! Vsak prenos tretjim osebam ali uporaba v nedogovorjene namene ni dovoljena po zakonu o avtorskih pravicah. Made with CAD/ProEngineer - changing is not allowed! Any unauthorized copying of this drawing or unauthorized distribution of the information contained herein is prohibited.



NAPETOST	230 V
VOLTAGE	
FREKVENCA	50 Hz
FREQUENCY	
MAKSIMALNA MOČ	2000 W
MAXIMAL POWER	
NAZIVNA MOČ	1800 W
NOMINAL POWER	

Temperaturno stikalo
Thermal switch
7AM030A5 (115° C ± 5° C) (E2)

DOMEL 463.3.4.06-12
230 V 50 Hz
219 76 92-02 Class 180(H)
YYWWD S NNNN
Made in Slovenia

OSNOVNE ZNAČILNOSTI		TYPICAL CHARACTERISTICS	
IZVEDBA	ENOSTOPENJSKA	FAN SYSTEM	SINGLE STAGE
ULEŽAJENJE	DVA KROGLIČNA LEŽAJA	BEARINGS	DUAL BALL
VRSTA PRETOKA	SKOZI MOTOR	DISCHARGE	THRU FLOW
SMER VRTENJA	DESNA	DIRECTION OF ROTATION	CW

○, * - pomembna mera
important dimension

				Tolerance odprtih mer Tolerances without individual indications ISO 8015 ISO 2768 - mK	Površinska hrapavost Surface finishing	Merilo Scale 1:1	Original format ISO 5457 - A3
				Datum/Date	Ime/Name	Gradivo / Material	
				Izdelal Designed	08.03.11	T. Čemažar	Naziv Title SESALNA ENOTA VACUM CLEANER MOTOR
				Pregl. Verified	13.09.13	J. Rihtaršič	
				E2	10938	13.09.13	
				D1	10842	01.07.13	D. Vrhunc
				C2	10633	14.02.13	D. Vrhunc
				B1	10001	16.09.11	T. Čemažar
				A0	9788	08.03.11	T. Čemažar
						Koda Code 463.3.406-12	List Sheet 3+
						Ozn. Mark	Št. obvestila Nr. of notice
				Otoki 21, 4228 Železniki, Slovenija		4633406012_SESALNA_ENOTA	